



SUPERIOR LED TECHNOLOGY



## **High Quality, Cost Effective LED Lighting Specialists**

RV Caravan & Marine Lighting • Emergency Lighting  
Navigation Lighting • Low Voltage Accessories

# Contents

## Emergency Lighting 3

## RV Caravan & Marine 6

## Navigation Lights 13

## Accessories 14

Every effort has been made to ensure the accuracy of information at time of print but does not warrant that details are free from errors or omissions.

### Heat Shrink - Adhesive Lined 4:1 ratio

Retardant, Adhesive Lined, Semi Rigid Polyolefin, 4:1 Heat Shrinkable Tubing. (Extended Temperature Range) Adhesive Lined Thermo fit HES 4:1 heat shrinkable tubing is specifically designed to meet automotive industry requirements for environmental sealing & electrical insulation of automotive wire splices, termination & components. HES 4:1 tubing has an outer jacket of radiation-cross linked, semi rigid polyolefin. Flame retardant & mechanically tough, the jacket provides strain relief & abrasion protection of wire splices & mechanically sensitive components. The inner layer of the tubing is a unique hot melt adhesive, specially formulated to adhere to all major types of automotive wire insulation & to perform well at an extended temperature range. Because HES 4:1 tubing has a high shrink ratio, only a few sizes are needed to cover a wide range of splice & component diameters. HES 4:1 tubing dimensions have been engineered to provide low cost sealing solutions on multiple wire splices (up to seven wires per side), using standard application equipment.



Part Number	Length {M}	Expanded Diameter {mm}	Recovered Diameter {mm}
16-HES1	1.2	5.72	1.27
16-HES2	1.2	7.44	1.65
16-HES3	1.2	10.85	2.41
16-HES4	1.2	17.78	4.45



# Emergency Lighting

## LED Multi Pattern High Intensity Mini Bar

Our 442M Extreme Optic & 280M Hi-Optic bars exceed industry standards with 23 flash patterns including rotating and multiple unit synchronisation. This multi-volt, 64 series has been tested in all Australian conditions including mining, local council & general working conditions. Made with premium materials to ensure its long term use. All magnetic models are fitted with rubber suction cap pads.



64-442



64-280

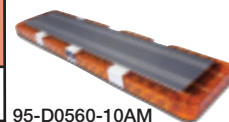
Part Number	Description	No of LED Modules	Dimensions {L x W x H} mm	Voltage	Max Current Draw @ 12.8vdc	Body/Lens	Colour
64-442M-6M	Large Mini Bar (Magnetic)	6 Linear	442 x 184 x 80	11 ~ 28	5A	Poly Carb	Amber
64-442-6M	Large Mini Bar (Permanent)	6 Linear	442 x 184 x 96	11 ~ 28	5A	Poly Carb	Amber
64-280M-6M	Petite Mini Bar (Magnetic)	6 Standard	280 x 173 x 72	11 ~ 28	5A	Poly Carb	Amber
64-280-6M	Petite Mini Bar (Permanent)	6 Standard	280 x 173 x 95	11 ~ 28	5A	Poly Carb	Amber

## LED 8 Pattern Low Profile Light Bar

This 95 series is the latest design to the Australian market, boasting multiple lengths & specific flash patterns for maximum attention warning. It also incorporates directional 'left, right' sequencing. The strength of the alloy body and the exceptional optics makes it perfect for heavy duty, high usage & rugged conditions. All models operated via a cabin mounted control box.

**NEW**

Part Number	Description	No of LED Modules	Dimensions {L x W x D} mm	Voltage	Max Current Draw @ 12.8vdc	Patterns	Colour
95-D0560-10AM	Light Bar	10	560 x 140 x 51	12 ~ 24	3.5A	8	Amber
95-D0560-10AGM	Light Bar	10	560 x 140 x 51	12 ~ 24	3.5A	8	Amber/Green
95-D1092-18AM	Light Bar	18	1092 x 140 x 51	12 ~ 24	6.3A	8	Amber
95-D1372-22AM	Light Bar	22	1372 x 140 x 51	12 ~ 24	7.7A	8	Amber



95-D0560-10AM



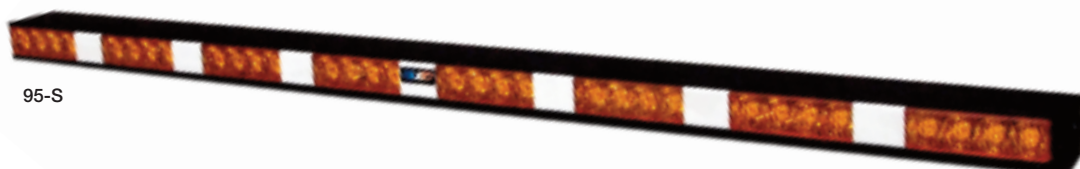
95-D0560-10AGM

**NEW**

## LED Warning Lamp - Single Sided

This single sided 95 series is the latest design in the Australian market. Multiple lengths & specific flash patterns, strong alloy body & exceptional optics make it perfect for heavy duty, high usage & rugged conditions. There are 8 specific flash patterns for maximum attention warning. All models operated via an internally mounted control box.

Part Number	Description	No of LED Modules	Dimensions {L x D x H} mm	Voltage	Max Current Draw @ 12.8vdc	Patterns	Colour
95-S0770-6AM	Warning Bar Single Sided	6 Head	770 x 63 x 37	12 ~ 24	2.1A	8	Amber
95-S1040-8AM	Warning Bar Single Sided	8 Head	1040 x 63 x 37	12 ~ 24	2.8A	8	Amber
95-S1300-10AM	Warning Bar Single Sided	10 Head	1300 x 63 x 37	12 ~ 24	3.5A	8	Amber



95-S

**NEW  
For May  
2013**

## LED Class 1 Rotating Beacon: SAE Reg 65

This new beacon is an introduction of new technology in the continuing evolution of the uses of LEDs & accompanying reflective surfaces. This beacon is a true 'Rotating', belt driven, multivolt, retro fitting beacon. This beacon, with the use of a parabolic reflector has SAE Reg 65, class 1 approval.

94-147LEDAM

94-147MLEDAM

94-147PLEDAM

94-147LEDBM

Part Number	Description	No of LED	Dimensions {W x H} mm	Voltage	Max Current Draw @ 12.8vdc	Colour
94-147LEDAM	3 Bolt	3	147 x 155	10 ~ 30	0.7A	Amber
94-147MLEDAM	Magnetic	3	147 x 162	10 ~ 30	0.7A	Amber
94-147PLEDAM	Pole Mount	3	147 x 266	10 ~ 30	0.7A	Amber
94-147LEDBM	Clear Lens Blue LED	3	Product Under Development			

## LED Warning Signal Beacon: Rotating & Strobe Patterns

This heavy duty rugged simulated rotating beacon, with its extensive series of pulse/strobe patterns has exceptional output even in full daylight. It has class 1 output in all pulse patterns & class 2 in the 3 rotating patterns. Its 5 year warranty is indicative of the quality design & is extensively used throughout Australia at all levels of industry.

Part Number	Description	No of LED	Dimensions {W x H} mm	Voltage	Avg. Current Draw @ 12.8vdc	Functions	Colour
64-167LEDAM	3 Bolt Beacon	12	167 x 143	11 ~ 28	1.5A	20	Amber
64-167MLEDAM	Magnetic Beacon	12	195 x 149	11 ~ 28	1.5A	20	Amber



64-167LEDAM



64-167MLEDAM

## LED Quad Flash / Strobe Beacons

The 42 series beacons are the perfect, economical & reliable unit for general use. A proven range used from forklifts through to mining.

Part Number	Description	No of SMD LEDs	Dimensions {W x H} mm	Voltage	Functions	Max Current Draw @ 12.8vdc	Colour
42-148LEDAM	3 Bolt	60	148 x 120	12 ~ 40	QUAD	0.75A	Amber
42-148MLEDAM	Magnetic	60	148 x 120	12 ~ 40	QUAD	0.75A	Amber
42-905LEDAM	3 Bolt	30	128 x 90	12 ~ 40	QUAD	0.35A	Amber
42-905MLEDAM	Magnetic	30	128 x 90	12 ~ 40	QUAD	0.35A	Amber
42-165LEDAM	3 Bolt	4 x 1w	165 x 125	12 ~ 40	QUAD	0.35A	Amber



42-148



42-905



42-165

## LED Multi Pattern High Intensity *LINEAR* Warning Lamp

QLED's 64 series **ONLY** utilises Linear optic technology. Incorporating the newest technology LEDs in combination with the linear optics and synchronisation providing maximum warning capabilities over wider viewing angles. 5 Year Warranty.



64-LN3AM



64-LN4AM



64-LN6AM

Part Number	Description	No of LED	Dimensions {L x H x W} mm	Voltage	Avg. Current Draw @ 12.8vdc	Functions	Colour
64-LN3AM	3 LED Linear Amber Module	3	93 x 43 x 32	10 ~ 30	0.1A	24	Amber
64-LN4AM	4 LED Linear Amber Module	4	117 x 43 x 32	10 ~ 30	0.15A	24	Amber
64-LN4WM	4 LED Linear White Module	4	117 x 43 x 32	10 ~ 30	0.15A	24	White
64-LN6AM	6 LED Linear Amber Module	6	155 x 43 x 32	10 ~ 30	0.25A	24	Amber
64-LN6WM	6 LED Linear White Module	6	155 x 43 x 32	10 ~ 30	0.25A	24	White
64-LN6AWM	6 LED Linear Amber/White	6	155 x 43 x 32	10 ~ 30	0.25A	24	Amber/White

## LED Work and Flood Lamps

QLED's series 1 proven range of work lamps has a design to suit most general applications. Our distinct long range light pattern has been found to be the best replacement for most halogen work lamps.



Part Number	Description	No of SMD LEDs	Dimensions {H x W x D} mm	Voltage	Max Current Draw @ 12.8vdc	Body/Lens	Colour Temp	Body Colour
57-RB10M	'FALCON' Work Lamp	10	145 x 115 x 50	9 ~ 36	1.04A	Alloy (G6)/(PC)	5 ~ 6.2K	Black
57-RW08M	'KESTREL' Marine Lamp	8	145 x 115 x 50	9 ~ 36	.09A	Alloy (G10)/(PC)	5 ~ 6.2K	White/Marine
57-LSB10M	'KINGFISHER' Work Lamp	10	122 x 88 x 55	9 ~ 36	1.04A	Alloy (G6)/(PC)	5 ~ 6.2K	Black

57-RB10M



57-RW08M



57-LSB10M



## LED Work and Flood Lamps - Buzzard Series

Ideal LED flood lamp for use where wide patterned illumination is needed. Perfect for small mowers & agricultural machines. Also perfect for illuminating small enclosures & an ideal reverse lamp.

Part Number	Description	No of SMD LEDs	Dimensions {W x H x D} mm	Voltage	Max Current Draw @ 12.8vdc	Body/Lens	Colour Temp	Body Colour
56-110-3	'BABY BUZZARD'	3	110 x 40 x 31	12	0.3A	Alloy (G6)/(PC)	5 ~ 6.2K	Black
56-111-6M	'BUZZARD'	6	110 x 115 x 31	12 ~ 24	0.7A	Alloy (G6)/(PC)	5 ~ 6.2K	Black



56-110-3



56-111-6M

## Reverse Alarms

Part Number	Description	dB	Dimensions {W x H x D} mm	Operating Voltage	Max Current Draw @ 12.8vdc
42-BA628102	Reverse Alarm	102	100 x 70 x 40	12 ~ 24	0.3A





# RV Caravan & Marine

The QLED comprehensive range of interior and exterior LED lighting for caravans, motor homes and marine applications, leads the industry in cost effective, high quality LED lighting solutions. It's our intricate knowledge of the performance, switching & understanding of your LED lighting requirements that sets us apart. We have lamps for almost all occasions & we guarantee our lamps will outperform 'Size for Size' any other lamps currently in our market.



41-177-198WY-3PM

## LED 177 Series Interior Ceiling Lamp

- Slim, classic general purpose light • Bright white SMD LEDs (high) + warm LEDs (comfort lighting) • 3 position switch • White body colour
- **Dual level high/low output requires fewer lights**
- **Covers mounting points when replacing fluorescents • Multivolt (10 ~ 30v)**

Upgraded  
MODEL

Part Number	Description	No of SMD LEDs	Dimensions mm	Voltage	Current Draw @ 12.8vdc	Lumen {+/- 25%}	Switched	Primary Colour	Secondary Colour	Body Colour
41-177-198WY-3PM	Interior Ceiling Lamp	192 + 6	177 x 177	10 ~ 30	0.9A	430	YES	CW	Warm	White

## LED 196 Series Interior / Exterior Ceiling Lamp 'Pancake'

- Ultra slim, contemporary general purpose light
- Bright white SMD LEDs (high) + warm LEDs (comfort lighting)
- 3 position switch or separate switching with 3 core cable
- **Dual level high/low output requires fewer lights • Covers mounting points when replacing fluorescents**

Part Number	Description	No of SMD LEDs	Dimensions {W x D} mm	Voltage	Current Draw @ 12.8vdc	Lumen {+/- 25%}	Switched	Primary Colour	Secondary Colour	Body Colour
41-196W-156WY	LED Ceiling Lamp	144 + 12	196 x 10	12	0.96A	370	No	CW	Warm	White
41-196C-156WY	LED Ceiling Lamp	144 + 12	196 x 10	12	0.96A	370	No	CW	Warm	Chrome
41-196W-156WY-3P	LED Ceiling Lamp	144 + 12	196 x 10	12	0.96A	370	Yes	CW	Warm	White
41-196C-156WY-3P	LED Ceiling Lamp	144 + 12	196 x 10	12	0.96A	370	Yes	CW	Warm	Chrome



41-196 (High)



41-196 (Low)

## LED 125W Series Interior / Exterior Lamp 'Flapjack'

- Extreme slimline, contemporary general purpose light suited to all RV and Marine applications
- Bright white SMD LEDs • Separate switching
- White or satin silver body colour
- **Available as 12 or 24 volt**



41-125W

Part Number	Description	No of SMD LEDs	Dimensions {W x D} mm	Voltage	Current Draw @ 12.8vdc	Lumen {+/- 25%}	Switched	Primary Colour	Body Colour
41-125W-72	LED Circular Low Profile Ceiling Lamp	72	125 x 10	12	0.48A	210	No	CW	White
41-125W-7224	LED Circular Low Profile Ceiling Lamp	72	125 x 10	24	0.24A	210	No	CW	White
41-125SS	LED Circular Bezel Satin Silver								Satin Silver

## LED 125C Series Interior / Exterior Lamp 'Flapjack'

- Super slimline general purpose light ideally suited to all RV and Marine applications including cockpits and lockers
- Bright white SMD LEDs + option of warm LEDs (comfort lighting) or red LEDs (night vision)
- "Senso - Touch" switching
- Chrome body colour
- **Available as 12 or 24 volt**

Touch  
Switch



41-125C

Part Number	Description	No of SMD LEDs	Dimensions {W x D} mm	Voltage	Current Draw @ 12.8vdc	Lumen {+/- 25%}	Switched	Primary Colour	Secondary Colour	Body Colour
41-125C-72-2P	LED Circular Low Profile Ceiling Lamp	72	125 x 10	12	0.48A	210	Yes	CW		Chrome
41-125C-7224-2P	LED Circular Low Profile Ceiling Lamp	72	125 x 10	24	0.24A	210	Yes	CW		Chrome
41-125C-78WR-3P	LED Circular Low Profile Ceiling Lamp	72 + 6	125 x 10	12	0.48A	210	Yes	CW	Red	Chrome
41-125C-78WY-3P	LED Circular Low Profile Ceiling Lamp	72 + 6	125 x 10	12	0.48A	210	Yes	CW	Warm	Chrome

## LED 69 Series Interior / Exterior Lamp 'Pikelet'

- Super slimline, down light sized, general purpose light suited to all RV and Marine applications
- Bright white SMD LEDs
- Separate switching
- White, satin silver or chrome body colour
- **Internal Heat Sink** • **Best in CLASS**

For 24v  
refer to  
Pg 12

Part Number	Description	No of SMD LEDs	Dimensions {W x D} mm	Voltage	Current Draw @ 12.8vdc	Lumen {+/- 25%}	Switched	Primary Colour	Body Colour
41-69W-30	LED Exterior Dome Light White	30	69 x 10	12	0.2A	93	No	CW	White
41-69SS-30	LED Exterior Dome Light Satin Silver	30	69 x 10	12	0.2A	93	No	CW	Satin Silver
41-69C-30	LED Exterior Dome Light Chrome	30	69 x 10	12	0.2A	93	No	CW	Chrome



41-69C-30



41-69SS-30



41-69W-30



41-43W

## LED Recessed Downlight

- Ultra compact, recessed mini downlight for use as feature lighting in RV and Marine applications
- Bright white SMD LEDs
- Separate switching
- White surround

For 24v  
refer to  
Pg 12

Part Number	Description	No of SMD LEDs	Dimensions {W & Cutout} mm	Voltage	Current Draw @ 12.8vdc	Lumen {+/- 25%}	Switched	Primary Colour	Body Colour
41-43W-12	LED Circular Recessed Down Light	12	43 x 30	12	0.1A	35	No	CW	White

## LED Slimline Multi-purpose Lamp

- Super slimline multi-purpose, wet or dry area light
- Bright white SMD LEDs (+ option of warm LEDs 83C only)
- Ideal under overhead cupboards, in storage lockers and bathrooms

For 24v  
refer to  
Pg 12

Touch  
Switch

Part Number	Description	No of SMD LEDs	Dimensions {W x D} mm	Voltage	Current Draw @ 12.8vdc	Lumen {+/- 25%}	Switched	Primary Colour	Secondary Colour	Body Colour
41-83C-36WY-3P	LED Circular Low Profile Ceiling Lamp	36	83 x 10	12	0.48A	93	Yes	CW	Warm	Chrome
64-148-24-2P	LED Rect. Low Profile Ceiling Lamp	24	148 x 71 x 20	12	0.17A	110	Yes	CW		White



41-83C



64-148



91-101G-6-5P



91-103G-9-5P



91-199G-12-5P

## LED Euro Series

- Latest European design • Bright white dimmable 3020 SMD LEDs
- Accommodates optional 2 way switching combinations
- Clear face on chrome base
- *The next generation in RV and Marine lighting*

**DIMMABLE**

Part Number	Description	No of SMD LEDs	Dimensions {L x W x D} mm	Voltage	Current Draw @ 12.8vdc	Lumen {+/- 25%}	Switched	Primary Colour	Secondary Colour	Body Colour
91-101G-6-5P	LED Small Rect. Low Profile Ceiling Lamp	6	100 x 75 x 10	10 ~ 16	0.2A	220	Yes	CW	Warm	Chrome
91-103G-9-5P	LED Small Round. Low Profile Ceiling Lamp	9	100 x 10	10 ~ 16	0.3A	270	Yes	CW	Warm	Chrome
91-199G-12-5P	LED Large Rect. Low Profile Ceiling Lamp	12	200 x 90 x 10	10 ~ 16	0.4A	450	Yes	CW	Warm	Chrome

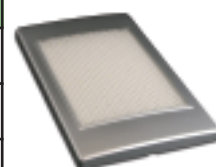
## LED 184W SMD Series Interior / Exterior Lamp

- Sleek, low profile rectangular design general purpose light • Bright white SMD LEDs
- Separate switching • White or satin silver body colour
- *Suitable for exterior applications • Newest version of this well known design*
- *Available as 12 or 24 volt*

Part Number	Description	No of SMD LEDs	Dimensions {L x W x D} mm	Voltage	Current Draw @ 12.8vdc	Lumen {+/- 25%}	Switched	Primary Colour	Body Colour
41-184W-84	LED Rectangular Low Profile Ceiling Lamp	84	184 x 110 x 12	12	0.55A	251	No	CW	White
41-184W-8424	LED Rectangular Low Profile Ceiling Lamp	84	184 x 110 x 12	24	0.28A	251	No	CW	White
41-184G-84	LED Rectangular Low Profile Ceiling Lamp	84	184 x 110 x 12	12	0.55A	251	No	CW	Satin Silver



41-184W



41-184G

## LED 185W SMD Series Interior Lamp

- Sleek, low profile rectangular design general purpose light • Switched
- Bright white SMD LEDs + optional warm LEDs (comfort lighting) • White or satin silver body colour
- *Newest version of this well known design*
- *Available as 12 or 24 volt*

Part Number	Description	No of SMD LEDs	Dimensions {L x W x D} mm	Voltage	Current Draw @ 12.8vdc	Lumen {+/- 25%}	Switched	Primary Colour	Secondary Colour	Body Colour
41-185W-84-2P	LED Rectangular Low Profile Ceiling Lamp	84	185 x 110 x 12	12	0.55A	251	Yes	CW		White
41-185W-96WY-3P	LED Rectangular Low Profile Ceiling Lamp	84 + 12	185 x 110 x 12	12	0.55A	251	Yes	CW	Warm	White
41-185W-8424-2P	LED Rectangular Low Profile Ceiling Lamp	84	185 x 110 x 12	24	0.28A	251	Yes	CW		White
41-185G-84-2P	LED Rectangular Low Profile Ceiling Lamp	84	185 x 110 x 12	12	0.55A	251	Yes	CW		Satin Silver



41-185G



41-185W

## LED Ellipse Series Interior Lamp

- Stylish ellipse design general purpose ceiling light • Bright white SMD LEDs ½ or full capabilities (41-288)
- Bright white SMD LEDs + 3W Festoon nightlight (41-204) • 3 position switching • White body colour
- *Ideal for retro fitting in many RVs*
- *Far better result than LED globe upgrade*

Part Number	Description	No of SMD LEDs	Dimensions {L x W x D} mm	Voltage	Current Draw @ 12.8vdc	Lumen {+/- 25%}	Switched	Primary Colour	Body Colour
41-288-144-3P	LED 'Ellipse' Double Ceiling Lamp	144	288 x 120 x 41	12	0.96A	420	Yes	CW	White
41-204-72-3P	LED 'Ellipse' Single Ceiling Lamp	72	204 x 120 x 41	12	0.48A	215	Yes	CW	White



41-288-144-3P



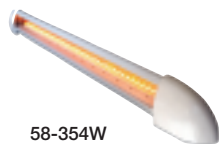
41-204-72-3P




 NEW  
RELEASE

## LED 58 Series Exterior Annexe Strip Light

- A range of sleek, low profile modern design, exterior lights
- Bright white SMD LEDs
- Specific 60° light angle up from vertical
- Separate switching
- White body colour
- **Range includes amber insect neutral LEDs with separate switching**
- **Reflective light source eliminates LED dazzle**

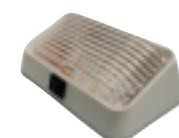


Part Number	Description	No of SMD LEDs	Dimensions {L x W x D} mm	Voltage	Current Draw @ 12.8vdc	Lumen {+/- 25%}	Switched	Primary Colour	Secondary Colour	Body Colour
58-221W-36W	LED Annexe Lamp	36	221 x 26 x 32	12	0.2A	TBA	No	CW		White
58-352W-72W	LED Annexe Lamp	72	350 x 26 x 32	12	0.4A	TBA	No	CW		White
58-354W-90WA	Dual LED Annexe Lamp <b>CW and AMBER</b>	45 + 45	350 x 26 x 32	12	0.4A	TBA	No	CW	Amber INSECT	White

## LED Annexe Exterior Lamps

- A combination of traditional and contemporary exterior lighting
- Super bright angled white SMD LEDs
- Switching as per table
- White body colour

Part Number	Description	No of SMD LEDs	Dimensions {L x W x D} mm	Voltage	Current Draw @ 12.8vdc	Lumen {+/- 25%}	Switched	Primary Colour	Body Colour
41-200-30	LED Annexe Lamp	30	200 x 100 x 50	12	0.2A	95	No	White	White
41-326-48	LED Annexe Lamp	48	326 x 100 x 50	12	0.32A	144	No	CW	White
64-150W-12CW-2P	LED Annexe Lamp	12	151 x 89 x 55	12	0.35A	95	Yes	CW	White



## LED High Output Annexe Bar Light

- Extreme, high intensity light output
- Low profile all alloy bar
- 90° light spread from vertical puts the light where its required
- Separate switching
- **9 x 1watt super bright Helio LEDs**
- **This is the light you use when you want light**

Part Number	Description	No of SMD LEDs	Dimensions {L x W x D} mm	Voltage	Current Draw @ 12.8vdc	Lumen {+/- 25%}	Switched	Primary Colour	Body Colour
56-455-9	LED High Power {9watt} Annexe Lamp	9	455 x 33 x 15	12	1.1A	425	No	CW	Alloy

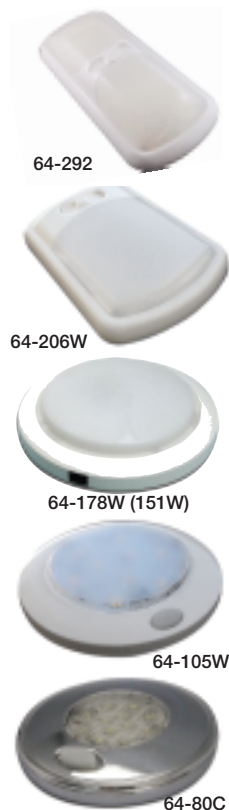


## LED LAS Polycarbonate Strip Lamps

- Robust, waterproof, high output strip light
- Bright super white SMD LEDs
- Separate switching (LAS12 SM internal switch)
- **Designed for maximum output, smallest package**
- **Ideal for harsh conditions (e.g. engine room or tool locker)**
- **Multivolt (10 ~ 30v)**

Part Number	Description	No of SMD LEDs	Dimensions {L x W x D} mm	Voltage	Current Draw @ 12.8vdc	Lumen {+/- 25%}	Switched	Primary Colour	Body Colour
60-LAS06M	Qled Hi-Output Strip Lamp {Polycarb}	8	170 x 20 x 20	10~30	0.17A	80	No	CW	Clear
60-LAS12M	Qled Hi-Output Strip Lamp {Polycarb}	16	320 x 20 x 20	10~30	0.35A	160	No	CW	Clear
60-LAS18M	Qled Hi-Output Strip Lamp {Polycarb}	24	470 x 20 x 20	10~30	0.53A	240	No	CW	Clear
60-LAS24M	Qled Hi-Output Strip Lamp {Polycarb}	32	620 x 20 x 20	10~30	0.73A	320	No	CW	Clear
60-LAS36M	Qled Hi-Output Strip Lamp {Polycarb}	48	920 x 20 x 20	10~30	1.08A	480	No	CW	Clear
60-LAS48M	Qled Hi-Output Strip Lamp {Polycarb}	64	1220 x 20 x 20	10~30	1.5A	640	No	CW	Clear
60-LAS12SM	Qled Hi-Output Strip Lamp {Polycarb}	16	340 x 20 x 20	10~30	0.35A	160	Yes	CW	Clear





## LED 64 Economy Series

- Stylish, economical & reliable interior lighting range • Bright white 3020 SMD LEDs
- Switched • The perfect alternative for any manufacturer with an eye to costs
- 12 & 24 volt as per table below

Part Number	Description	No of SMD LEDs	Dimensions {L x W x D} mm	Voltage	Current Draw @ 12.8vdc	Lumen {+/- 25%}	Switched	Primary Colour	Body Colour
64-292-96-3P	LED 'Traditional' Double Ceiling Lamp	96	292 x 126 x 41	12	0.58A	158	Yes	CW	White
64-206W-12CW-2P	Economical Single Ceiling Lamp	12	186 x 126 x 25	12	0.3A	TBA	Yes	CW	White
64-178W-24CWM-2P	Economical Single Ceiling Lamp	24	178 x 35	10 ~ 30	0.5A	TBA	Yes	CW	White
64-151W-18CWM-2P	Economical Single Ceiling Lamp	18	151 x 26	10 ~ 30	0.4A	TBA	Yes	CW	White
64-105W-9CW-2P	Economical Single Ceiling Lamp	9	105 x 15	12	0.3A	TBA	Yes	CW	White
64-80C-12CM-2P	Economical Single Ceiling Lamp	12	80 x 14	12	0.1A	TBA	Yes	CW	Chrome

## LED Fluorescent Style Lights & Swivelling Strip

- Sleek, low profile high output design
- This very popular design is ideally suited to ceiling as well as under overhead cabinets
- Available in cool or warm white • Switched & operates from 12 to 24 volts
- **An excellent replacement for traditional single or dual 30cm fluoros**

Part Number	Description	No of LEDs	Dimensions {L x W x S} mm	Voltage	Current Draw @ 12.8vdc	Lumen {+/- 25%}	Switched	Primary Colour	Body Colour
41-347-20	LED Interior Lamp-Strip Type	20	347 x 15	12	0.14	70	Yes	CW	Satin Silver
64-385-12WWM-2P	LED Interior Fluoro Style Lamp	12	385 x 67 x 24	10 ~ 30	0.4	320	Yes	Warm	White
64-385-12CWM-2P	LED Interior Fluoro Style Lamp	12	385 x 67 x 24	10 ~ 30	0.4	360	Yes	CW	White



## LED Flexible Reading / Map Lights

- Range of modern hard wired and plug-in reading lights
- Bright white, warm white or red LEDs
- Switched • Black body colour
- **Ideal map / chart light or personal reading light**

Part Number	Description	No of LEDs	Length mm	Voltage	Switched	Primary Colour	Body Colour
64-400-9WW	LED Flex Reading Light {Fixed model}	9	400	12	Yes	Warm	Black
64-400-9CW	LED Flex Reading Light {Fixed model}	9	400	12	Yes	White	Black
41-325-15R	LED Flex Reading Light {Fixed model}	15	325	12	Yes	Red	Black
41-325-15CP	LED Flex Reading Light {Plug in model}	15	325	12	Yes	CW	Black

## LED Dimmable Reading Lamps

- Very modern, latest design reading lamp in solid all polished alloy body
- Bright white LED • Dimmable via touch switch + night light
- All touch switch operation in both 35° and 60° version
- The perfect reading light solution for both bed and lounge areas
- **Fully rotating and pivoting movement ensures ideal positioning • Multivolt (10 ~ 30v)**

**DIMMABLE**

91-RL63-705

91-RL35-705

Part Number	Description	No of LEDs	Dimensions mm {B x H}	Voltage	Beam Angle	Current Draw @ 12.8vdc	Switched	Primary Colour	Body Colour
91-RL63-705-4P	Living Area Lamp	1 x 3w	60 x 100	10 ~ 30	60	0.25A	Yes	CW	Alloy
91-RL35-705-4P	Bedroom Area Lamp	1 x 3w	60 x 100	10 ~ 30	30	0.25A	Yes	CW	Alloy

## LED Economy Reading Lamp

- Modern alloy body • Various designs for all applications
- Single 1 or 3watt high output white LED • Switched
- **Readily available in bulk quantities**

Part Number	Description	No of LEDs	Dimensions mm {L x W x H}	Voltage	Beam Angle	Lumen {+/- 25%}	Switched	Primary Colour	Body Colour
54-WL03B1	LED Flex Reading Light	1 x 1w	37 x .. x 155	12	60	120	Yes	White	Alloy
54-WL04B1	LED Flex Reading Light	1 x 1w	37 x .. x 295	12	60	120	Yes	White	Alloy
91-RL63-701-2P	LED Reading Light	1 x 1w	80 x 40 x 85	10 ~ 16	60	120	Yes	White	Alloy
91-RL63-712-2P	LED Reading Light	1 x 3w	70 x 40 x 90	10 ~ 16	60	140	Yes	White	Alloy

54-WL03B1

54-WL04B1

91-RL63-712

91-RL63-701

## LED Reading Lamps

- Choice of cool or warm reading light in satin grey or silver finish
- MR16 or bayonet globes provide flexibility • Switched
- Rotating and pivoting action
- **An economical alternative for the cost conscious**

Part Number	Description	No of SMD LEDs	Dimensions {B x H} mm	Voltage	Beam Angle	Lumen {+/- 25%}	Switched	Primary Colour	Body Colour
41-939-6SMD	LED Swivel Reading Light {LED globe}	12	80 x 95	12	120	90	Yes	CW	Satin Silver
64-518-MR16W	LED Swivel Reading Light {MR16}	MR16	75 x 130	12	38	100	Yes	CW	Alloy
64-518-MR16Y	LED Swivel Reading Light {MR16}	MR16	75 x 130	12	38	130	Yes	Warm	Alloy

41-939

64-518



## LED Eyeball Console Light



64-165-2-2P

- Black brushed alloy finish • 3watt warm LEDs
- Individual incorporated switching • Fully adjustable
- **Requires 35mm recess** • **Compliment any overhead console**
- **Easy retro fit in most cases** • **Multivolt (12 ~ 24)**

Part Number	Description	No of LEDs	Dimensions {L x W} mm	Voltage	Current Draw @ 12.8vdc	Switched	Primary Colour	Body Colour
64-165-2-2P	Eyeball Reading Lamp	2 x 3w	165 x 70	12 ~ 24	0.4A	Yes	White	Black

## LED Clip-On Strip Camping Light

- Robust, high output strip light • Alloy body with clips for pole mounting
- 3m cable with cig plug • Switched
- White body colour with diffusing lens

Part Number	Description	No of SMD LEDs	Dimensions {L x W} mm	Voltage	Current Draw @ 12.8vdc	Lumen {+/- 25%}	Switched	Primary Colour	Body Colour
41-368-72-2P-CP	Clip-On Strip Camping Light + Cig Plug & Lead	72	368 x 45	12	0.4A	TBA	Yes	CW	White



## '41 - MVA'... 24v to 12v in-line Reducer



Multitude of uses where only 12 volt products are available for a 24 volt application. Easily hidden during installation, eliminating the need of expensive Reducers. Suits applications that will not exceed 0.7amps @ 12v.

## LED 86 Series SMD Courtesy Lamp

- Smart, unique & stylish internal / external courtesy lamps • A range of colours available
- Separate switching • Chrome body colour
- **Waterproof**

Part Number	Description	No of SMD LEDs	Dimensions {L x W x D} mm	Voltage	Current Draw @ 12.8vdc	Switched	Primary Colour	Body Colour
41-86C-3A	Courtesy Light	3	86 x 33 x 10	12	0.06A	No	Amber	Chrome
41-86C-3B	Courtesy Light	3	86 x 33 x 10	12	0.06A	No	Blue	Chrome
41-86C-3G	Courtesy Light	3	86 x 33 x 10	12	0.06A	No	Green	Chrome
41-86C-3R	Courtesy Light	3	86 x 33 x 10	12	0.06A	No	Red	Chrome
41-86C-3W	Courtesy Light	3	86 x 33 x 10	12	0.06A	No	White	Chrome



41-86C

# Navigation Lights

- Port and Starboard or Bicolour + Stern and Masthead Lights
- 360° in white, red and green
- USCG IMO / COLREGS ABYC CE
- Shock and vibration proof
- Ultra low current draw, typically 0.14A at 12V
- Fully approved for vessels up to and including 20m
- Printed approval certificates available
- Sealed to minimum IP67 certification
- Minimum visible distance 2NM
- Supplied with 2m tinned copper cable
- Multivolt



Part Number	Description	No of LEDs	Beam Angle	Visible Distance	Voltage	Current Draw @ 12.8vdc	Lamp Weight	Cable Weight	Dimensions mm {H x W x D}
77-S33-B1125STBM	Starboard	2 x 1w	112.5	2NM	9 ~ 33	0.14A	150g approx.	100g approx.	88 x 78 x 50
77-S33-B1125PRTM	Port	2 x 1w	112.5	2NM	9 ~ 33	0.14A	150g approx.	100g approx.	88 x 78 x 50
77-S33RG-B225M	Bi-Colour	12 x 0.2w	225	2NM	9 ~ 33	0.18A	150g approx.	100g approx.	88 x 78 x 43
77-S33-B135STNM	Stern	2 x 1w	135	2NM	9 ~ 33	0.14A	150g approx.	100g approx.	88 x 78 x 50
77-S33-B225MHM	Masthead	2 x 1w	225	3NM	9 ~ 33	0.14A	150g approx.	100g approx.	88 x 78 x 50

## Navigation Lights 360°

Part Number	Description	No of LEDs	Beam Angle	Visible Distance	Voltage	Current Draw @ 12.8vdc	Lamp Weight	Cable Weight	Dimensions mm {H x Base}
77-S32-B360WHTM	360° White	1 x 1w	360	3NM	9 ~ 30	0.1A	90g approx.	100g approx.	65 x 83
77-S32-B360GRNM	360° Green	1 x 1w	360	2NM	9 ~ 30	0.1A	90g approx.	100g approx.	65 x 83
77-S32-B360REDM	360° Red	1 x 1w	360	2NM	9 ~ 30	0.1A	90g approx.	100g approx.	65 x 83



## LED Masthead / Deck Light



Part Number	Description	No of LEDs	Beam Angle	Visible Distance	Voltage	Current Draw @ 12.8vdc	Lamp Weight	Cable Weight	Dimensions mm {H x W x D}
77-S33-B225DMHM	Masthead Light	2 x 1w	225	3NM	9 ~ 33	0.37A	310g approx.	N/A	141 x 195 x 61
	Deck Light	4 x 1w	10	N/A	9 ~ 33	0.23A	N/A	N/A	N/A

# Accessories Connectors

*A comprehensive range of vehicle power accessories for today's increasing demand by electronic devices and charging requirements. The range reflects our desire to provide flexibility, ease of installation and high power output, without compromise.*

## Accessory SOCKET



87-2720

Part Number
87-2720BP
Description
Socket-Cigarette {Flush or Flush Rear Mount}
Rated
16A



87-2730

Part Number
87-2730BP
Description
Socket-Din
Rated
15A



87-2721

Part Number
87-2721BP
Description
Socket-Cigarette {Flush}
Rated
20A



87-2731

Part Number
87-2731BP
Description
Socket-Din {Flush}
Rated
15A

## Accessory PLUG



87-2760

Part Number
87-2760BP
Description
Plug-Cigarette Fused
Rated
5A



87-2763

Part Number
87-2763BP
Description
Plug-Cig/Din Combo
Rated
15A



87-2762

Part Number
87-2762BP
Description
Plug-Din
Rated
20A



87-2764

Part Number
87-2764BP
Description
Cig.Plug-Twin USB 5v/2A
Rated
5v/2A

## HEAVY DUTY Single Accessory SOCKET



87-2722

Part Number
87-2722BP
Description
Socket {Single Cig Surface Mount}
Rated
20A
Dimensions {L x W x H} mm
85 x 55 x 53



87-2732

Part Number
87-2732BP
Description
Socket {Single Din Surface Mount}
Rated
15A
Dimensions {L x W x H} mm
85 x 55 x 53



## HEAVY DUTY Twin Accessory SOCKET



87-2723

Part Number
87-2723BP
Description
Dual Surface - Double Cig
Rated
20A
Dimensions {L x W x H}
91 x 98 x 55



87-2733

Part Number
87-2733BP
Description
Dual Surface - Double Din
Rated
15A
Dimensions {L x W x H}
91 x 98 x 55



87-2743

Part Number
87-2743BP
Description
Dual Surface - Combo Cig/Din
Rated
20/1
Dimensions {L x W x H}
91 x 98 x 55



87-2724

Part Number
87-2724BP
Description
Dual Flush - Double Cig
Rated
20A
Dimensions {L x H}
105 x 44



87-2734

Part Number
87-2734BP
Description
Dual Flush - Double Din
Rated
15A
Dimensions {L x H}
105 x 44



87-2744

Part Number
87-2744BP
Description
Dual Flush - Combo Cig/Din
Rated
20/16A
Dimensions {L x H}
105 x 44

## Low Voltage Accessories



Part Number
49-QSY50
Description
50A Genuine Anderson Connector
MOQ
100



Part Number
49-QSY175
Description
175A Genuine Anderson Connector
MOQ
25



Part Number
16-TSY50-175B
Description
50A TE High Current Connector
MOQ
175



Part Number
16-TSY50-700B
Description
50A TE High Current Connector
MOQ
700



Part Number
41-2725
Description
In-Line Boot for Socket
Fits on rear of 50A Andersons



Part Number
75-TV50
Description
50A Mounting Enclosure
Anderson Plug NOT Included



Part Number
75-TV175
Description
175A Mounting Enclosure
Anderson Plug NOT Included



Part Number
75-SY50CBK
Description
Cover Boot suit 50A Connector



Part Number
75-SY175CBK
Description
Cover Boot suit 175A Connector



Part Number
75-1236VM
Description
LCD DC Voltmeter 12~36vdc



Unit 4/5 Kessling Avenue Kunda Park QLD 4556  
Phone: +61 7 5456 2656 Fax: + 61 7 5453 4385  
Email: [qled.orders@gmail.com](mailto:qled.orders@gmail.com)

**[WWW.QLED.COM.AU](http://WWW.QLED.COM.AU)**